



SY365H

Powerful Tool for Mining Excavation Value Leader

Brand new change QUALITY
CHANGES THE WORLD
Quality changes the world



Selling Points

● Excellent performance

Excellent performance, high efficiency and low consumption: The efficiency is 8% higher, and the fuel consumption is 10% lower; it has ultra-high digging force. The machine is designed for mine operation with heavy load, and has more smooth controllability.

● Super long service life

Through strict durability and bench tests, the design life of five major structural members and its key parts like pump, valve, oil cylinder, reducer, oil tank and cabin etc. is extended by 1 time.

● Super high adaptability

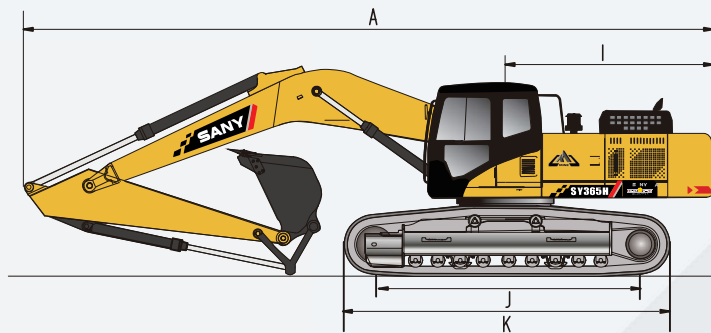
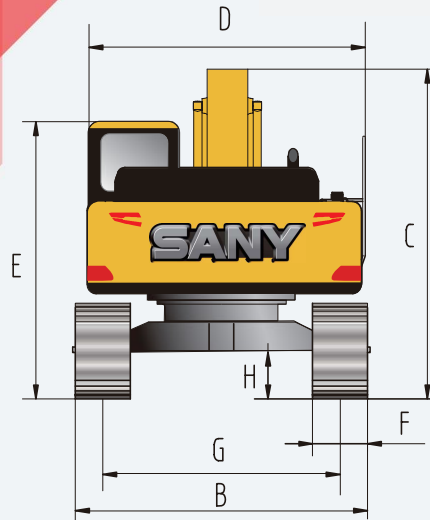
It can be equipped with more than 10 working devices; multi-level filtering system provides top-grade protection for the engine, and enlarged cooling system maintains the equipment always at optimal temperature.

● Super lower maintenance cost

It is easily accessible for the replacement of maintainable parts, and it is more convenient for maintenance; with long life oils and filter elements, the maintenance interval is extended by 1 time, and the maintenance cost is reduced by 50%.

Overall dimensions (mm)

Standard



SY365H

A. Overall length (in transportation state)	11530
B. Overall width	3190
C. Overall height (in transportation state)	3545
D. Upper width	3150
E. Overall height (cab top)	3320
F. Width of standard track shoe	600
G. Track gauge	2590
H. Minimum ground clearance	550
I. Slewing radius of tail	3560
J. Ground contact length of track	4140
K. Track shoe length	5065

Performance parameters

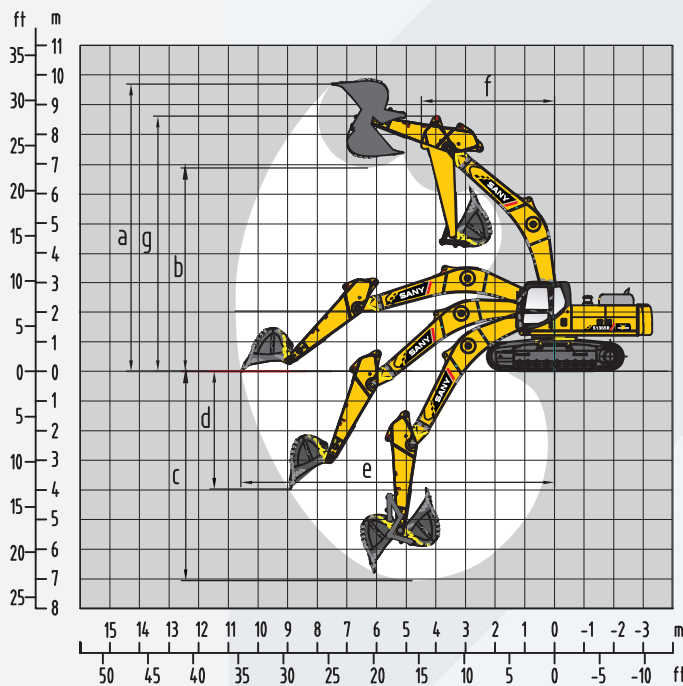
Standard

SY365H

Total weight, kg	36000
Bucket capacity m ³	1.6-2.32
Rated power, kW/rpm	212/2000
Traveling speed (high/low), km/h	5.5/3.5
Slewing speed, rpm	9.5
Gradeability	70%/35°
Ground pressure, kPa	65
Digging force of bucket, kN	235
Digging force of bucket rod, kN	180

Operating range (mm)

Standard



SY365H

a. Maximum digging height	9890
b. Maximum unloading height	6920
c. Maximum digging depth	7050
d. Maximum digging depth with vertical boom	3970
e. Maximum digging distance	10780
f. Minimum slewing radius	4495
g. Maximum height at minimum slewing radius	8600

SANY Heavy Machinery Co., Ltd.

SANY Industrial Park, Dongcheng Avenue, Kunshan Economic & Technological Development Zone, Jiangsu Province

Post code: 215300

After-sales service hotline: 4008-28-2318

Consulting & complaint hotline: 4008-87-9318



Note

The documents and technical specification will be changed without further notice due to continuous technical improvement.
The machine in the picture might include additional equipment.

ZJSYX0604CH (August, 2017)

Printed in CHINA