

# SANY



**QUALITY  
CHANGES THE WORLD**

**Vertical Reach: 30.1 m**

## **SYG5191THBCZ 30C-8 / 30C-8(R) TRUCK-MOUNTED CONCRETE PUMP**

### **Energy-saving**

With cycle times of up to 29 per minute (at 12MPa), pump efficiency is increased up to 25% while fuel consumption is decreased by up to 10%.

### **Highly Wear Resistant Parts**

The highly wear resistant parts improve efficiency and reduce down time.

### **Safety**

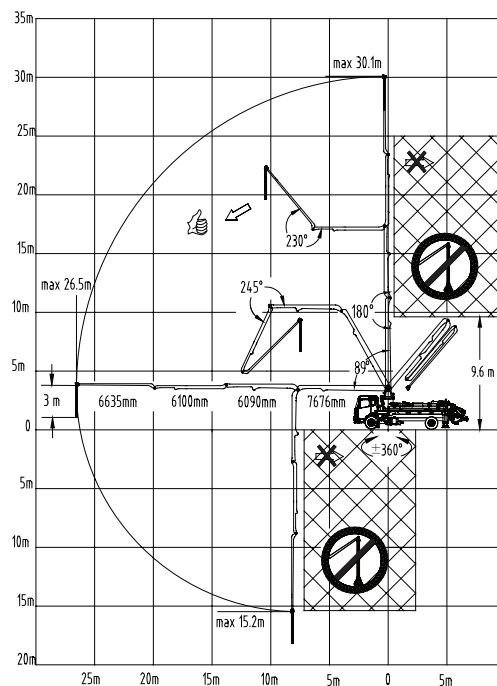
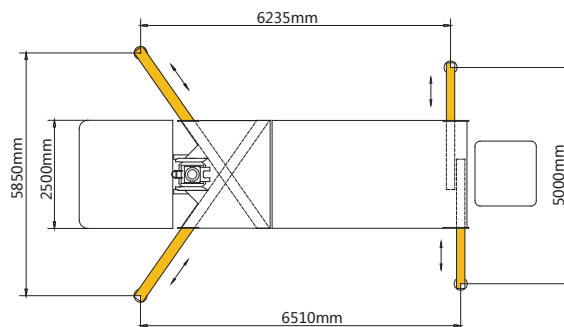
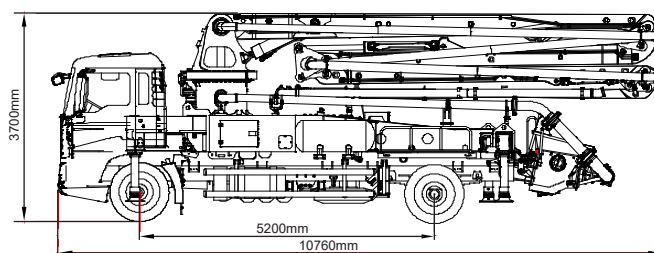
Our C8 series truck mounted concrete pump exemplifies Sany's precise, rigorous manufacturing philosophy and uncompromising focus on safety.

### **Self-diagnosis Technology**

Continually monitors more than 200 aspects of the system during operation. Faults are displayed on the monitor. Review of the detected faults can reduce troubleshooting time by 70%.

# TECHNICAL SPECIFICATIONS

Model		SYG5191THBCZ 30C-8	SYG5191THBCZ 30C-8(R)
Overall Specification	Length(mm)	10760	10760
	Width(mm)	2500	2500
	Height(mm)	3700	3700
	Empty Weight(kg)	19000	19000
Boom & Outrigger Specification	Vertical Reach(m)		30.1
	Horizontal Reach(m)		26.5
	Reach Depth(m)		15.2
	Min. Unfolded Reach(m)		9.6
	1st Section	Length(mm)	7676
		Articulation(°)	89
	2nd Section	Length(mm)	6090
		Articulation(°)	180
	3rd Section	Length(mm)	6100
		Articulation(°)	245
	4th Section	Length(mm)	6635
		Articulation(°)	230
	Rotation(°)		360
Pumping System Specification	Front Outrigger Spread L-R(mm)		5850
	Rear Outrigger Spread L-R(mm)		5000
	Output(m³/h)		108
	Pressure(MPa)		6.6
	Max. Strokes Per Minute(times/min)		25
	Delivery Cylinder Diameter(mm)		230
	Stroke Length(mm)		1600
	Hydraulic System		Open
	Hydraulic System Oil Pressure(MPa)		32
	Oil Tank Capacity(L)		320
	Water Tank Capacity(L)		300
	Pipe Diameter(mm)		125
	End Hose Length(m)		3
	End Hose Diameter(mm)		125
Chassis Specification	Chassis Brand		SINOTRUK
	Chassis Model		ZZ5207M521GC1
	Engine Type		MC07.24-30
	Engine Maximum Net Power(kW/rpm)		173/2300
	Emission Standard		China stage III
	Fuel Tank Capacity(L)		300
	Displacement(L)		6.87
	Max. Speed(km/h)		90



## SANY HEAVY INDUSTRY CO., LTD.

SANY Industry Town, Changsha Economic and Technological Development Zone,  
Hunan Province, China  
Service Line: +86 4006 098 318 E-mail: crd@sany.com.cn

**SANY**<sup>®</sup>  
QUALITY CHANGES THE WORLD.