

**SANY**



**QUALITY  
CHANGES THE WORLD**

**Vertical Reach: 36.5m**

## **SYG5283THB 380C-8 / 30C-8(R) TRUCK-MOUNTED CONCRETE PUMP**

### **Energy-saving**

With cycle times of up to 29 per minute (at 12MPa), pumpefficiency is increased up to 25% while fuel consumption is decreased by up to 10%.

### **Highly Wear Resistant Parts**

The highly wear resistant parts improve efficiency and reduce down time.

### **Safety**

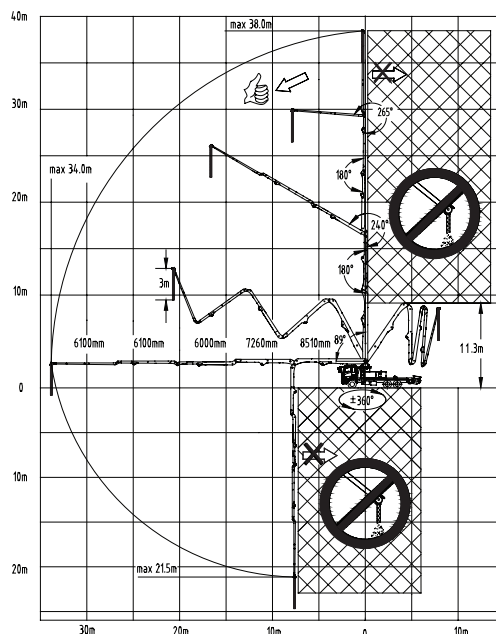
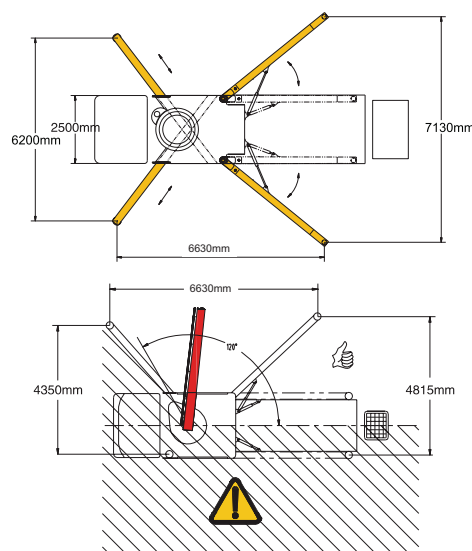
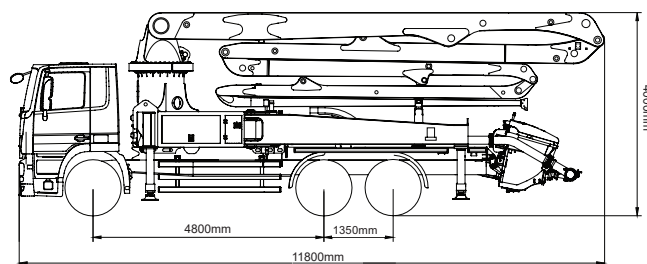
Our C8 series truck mounted concrete pump exemplifies Sany's precise, rigorous manufacturing philosophy and uncompromising focus on safety.

### **Self-diagnosis Technology**

Continually monitors more than 200 aspects of the system during operation. Faults are displayed on the monitor. Review of the detected faults can reduce troubleshooting time by 70%.

# TECHNICAL SPECIFICATIONS

| Model                          |                                     | SYG5283THB<br>380C-8 | SYG5283THB<br>380C-8(R) |      |
|--------------------------------|-------------------------------------|----------------------|-------------------------|------|
| Overall Specification          | Length(mm)                          | 11510                | 11510                   |      |
|                                | Width(mm)                           | 2500                 | 2500                    |      |
|                                | Height(mm)                          | 4000                 | 4000                    |      |
|                                | Dead Weight(kg)                     | 27800                | 27800                   |      |
| Boom & Outrigger Specification | Vertical Reach(m)                   | 38                   | 38                      |      |
|                                | Horizontal Reach(m)                 | 34                   | 34                      |      |
|                                | Reach Depth(m)                      | 21.5                 | 21.5                    |      |
|                                | Min. Unfolded Reach(m)              | 11.3                 | 11.3                    |      |
|                                | 1st Section                         | Length(mm)           | 8510                    | 8510 |
|                                |                                     | Articulation(°)      | 89                      | 89   |
|                                | 2nd Section                         | Length(mm)           | 7260                    | 7260 |
|                                |                                     | Articulation(°)      | 180                     | 180  |
|                                | 3rd Section                         | Length(mm)           | 6000                    | 6000 |
|                                |                                     | Articulation(°)      | 240                     | 240  |
|                                | 4th Section                         | Length(mm)           | 6100                    | 6100 |
|                                |                                     | Articulation(°)      | 180                     | 180  |
|                                | 5th Section                         | Length(mm)           | 6100                    | 6100 |
|                                |                                     | Articulation(°)      | 265                     | 265  |
| Rotation(°)                    |                                     | ±360                 | ±360                    |      |
| Front Outrigger Spread L-R(mm) |                                     | 6200                 | 6200                    |      |
| Rear Outrigger Spread L-R(mm)  |                                     | 7130                 | 7130                    |      |
| Pumping System Specification   | Output (m <sup>3</sup> /h)          | Low-Pressure         | 170                     | 170  |
|                                |                                     | High-Pressure        | 120                     | 120  |
|                                | Pressure (MPa)                      | Low-Pressure         | 8.3                     | 8.3  |
|                                |                                     | High-Pressure        | 12                      | 12   |
|                                | Max. strokes per minute (times/min) | Low-Pressure         | 29                      | 29   |
|                                |                                     | High-Pressure        | 19                      | 19   |
|                                | Delivery Cylinder Diameter(mm)      |                      | 260                     | 260  |
|                                | Stroke Length(mm)                   |                      | 1900                    | 1900 |
|                                | Hydraulic System                    |                      | Open                    | Open |
|                                | Hydraulic System Oil Pressure(MPa)  |                      | 32                      | 32   |
|                                | Oil Tank Capacity(L)                |                      | 640                     | 640  |
|                                | Water Tank Capacity(L)              |                      | 600                     | 600  |
|                                | Pipe Diameter(mm)                   |                      | 125                     | 125  |
| End Hose Length(m)             |                                     | 3                    | 3                       |      |
| End Hose Diameter(mm)          |                                     | 125                  | 125                     |      |
| Chassis Specification          | Chassis Brand                       | SINOTRUK             | SINOTRUK                |      |
|                                | Chassis Model                       | ZZ5356V464MC2        | ZZ5356V464MC2           |      |
|                                | Engine Type                         | MC11.39-30           | MC11.39-30              |      |
|                                | Engine Maximum Net Power(kW/rpm)    | 287/1900             | 287/1900                |      |
|                                | Emission Standard                   | China stage III      | China stage III         |      |
|                                | Fuel Tank Capacity(L)               | 400                  | 400                     |      |
|                                | Displacement(L)                     | 10.518               | 10.518                  |      |
| Max. Speed(km/h)               | 80                                  | 80                   |                         |      |



## SANY HEAVY INDUSTRY CO., LTD.

SANY Industry Town, Changsha Economic and Technological Development Zone,  
Hunan Province, China  
Service Line: +86 4006 098 318 E-mail: crd@sany.com.cn