



**QUALITY
CHANGES THE WORLD**

Vertical Reach: 36.5m

SYG5253THB 370C-8(SZ-EU) TRUCK-MOUNTED CONCRETE PUMP

Energy-saving

With cycle times of up to 29 per minute (at 12MPa), pump efficiency is increased up to 25% while fuel consumption is decreased by up to 10%.

Highly Wear Resistant Parts

The highly wear resistant parts improve efficiency and reduce down time.

Safety

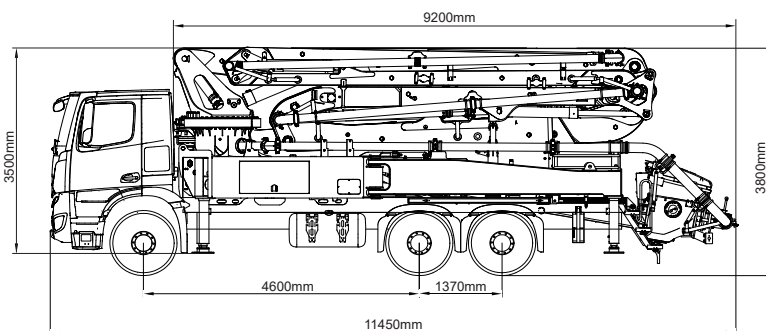
Our C8 series truck mounted concrete pump exemplifies Sany's precise, rigorous manufacturing philosophy and uncompromising focus on safety.

Self-diagnosis Technology

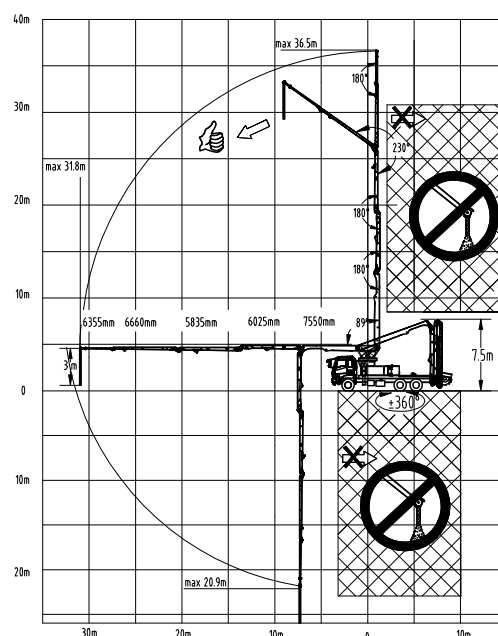
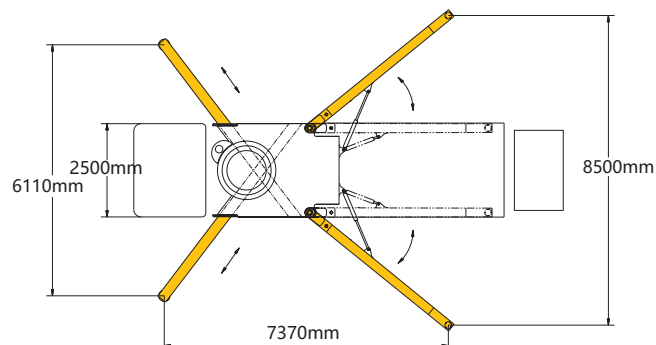
Continually monitors more than 200 aspects of the system during operation. Faults are displayed on the monitor. Review of the detected faults can reduce troubleshooting time by 70%.

TECHNICAL SPECIFICATIONS

Model			SYG5253THB 370C-8(SZ-EU)
Overall Specification	Length(mm)		11450
	Width(mm)		2500
	Height(mm)		3800
	Dead Weight(kg)		25000
	Weight(SZ)(kg)		16900
Boom & Outrigger Specification	Vertical Reach(m)		36.5
	Horizontal Reach(m)		31.8
	Reach Depth(m)		20.9
	Min. Unfolded Reach(m)		7.5
	1st Section	Length(mm)	7550
		Articulation(°)	89
	2nd Section	Length(mm)	6025
		Articulation(°)	180
	3rd Section	Length(mm)	5835
		Articulation(°)	180
	4th Section	Length(mm)	6660
		Articulation(°)	230
	5th Section	Length(mm)	6355
		Articulation(°)	180
	Rotation(°)		±360
	Front Outrigger Spread L-R(mm)		6110
	Rear Outrigger Spread L-R(mm)		8500
Pumping System Specification	Output(m³/h)		150
	Pressure(MPa)		7
	Delivery Cylinder Diameter(mm)		230
	Stroke Length(mm)		1600
	Hydraulic System		Open
	Hydraulic System Oil Pressure(MPa)		32
	Oil Tank Capacity(L)		320
	Water Tank Capacity(L)		350
	Pipe Diameter(mm)		125
	End Hose Length(m)		3
	End Hose Diameter(mm)		125
Chassis Specification	Chassis Brand		/
	Chassis Model		/
	Engine Type		/
	Engine Maximum Net Power(kW/rpm)		/
	Emission Standard		/
	Fuel Tank Capacity(L)		/
	Displacement(L)		/
	Max. Speed(km/h)		/



The External Dimension Diagram Based on 3 axes Volvo Chassis



SANY HEAVY INDUSTRY CO., LTD.

SANY Industry Town, Changsha Economic and Technological Development Zone,
Hunan Province, China
Service Line: +86 4006 098 318 E-mail: crd@sany.com.cn

SANY[®]
QUALITY CHANGES THE WORLD.